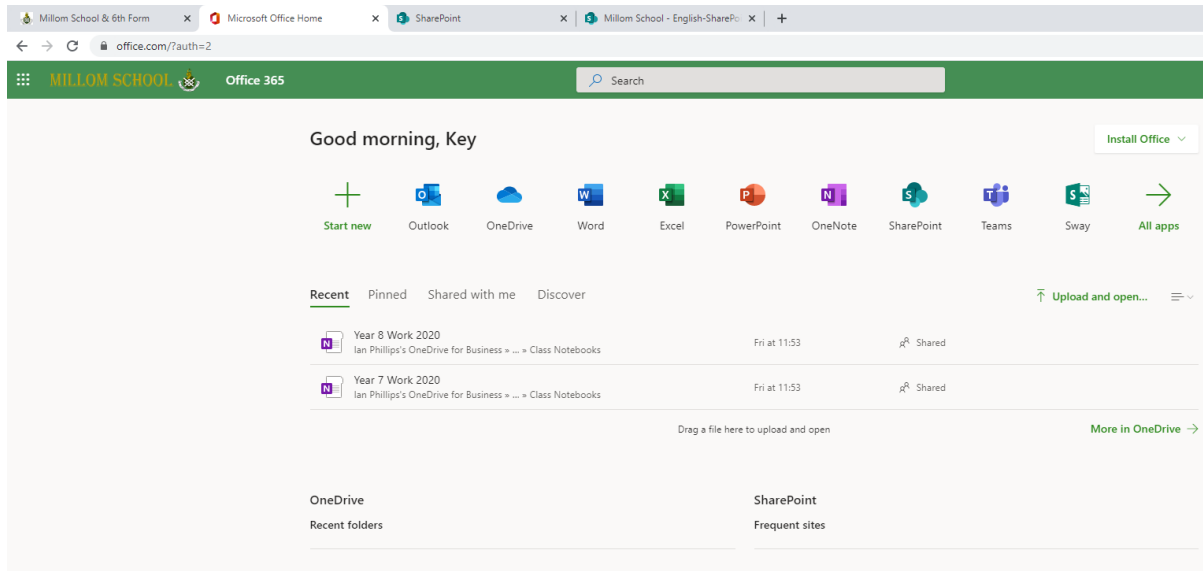


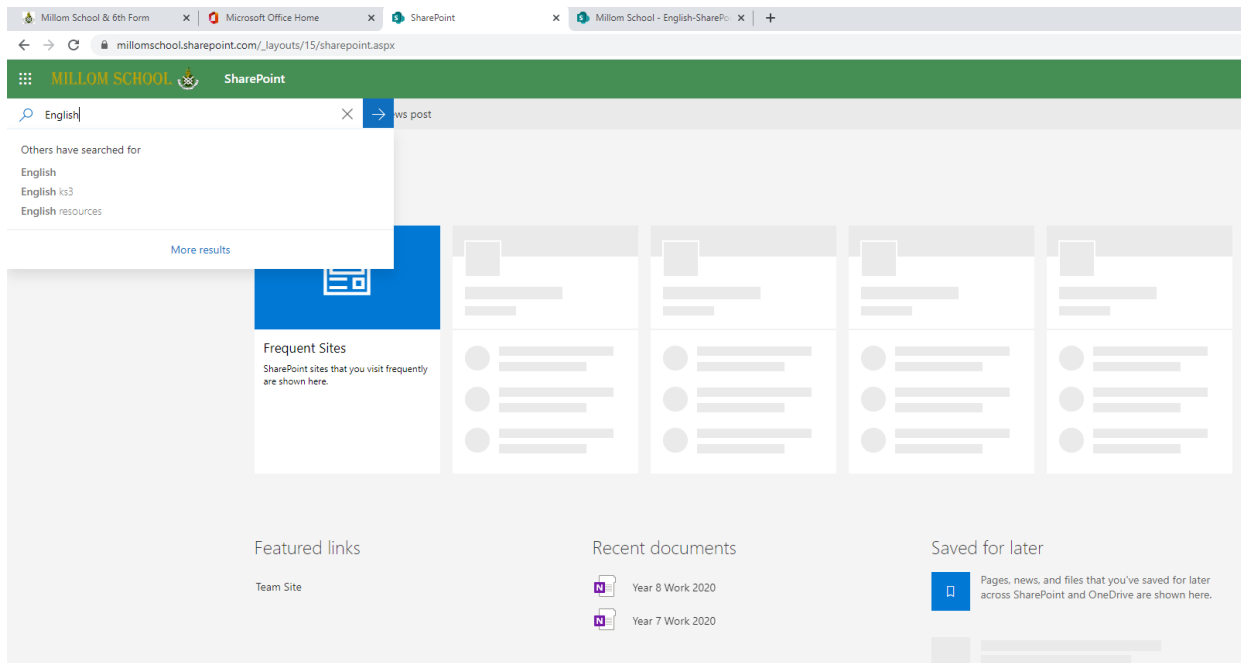
# SharePoint-How to Find, for Student's

Your teacher should of given you an assignment either by email or in the OneNote Class work group, SharePoint has just been setup as a repository (basically like subject shares on the school network).

1. After login in to Office 365 select SharePoint from the menu (the menu is in the top left corner and is a box made of 9 dots).

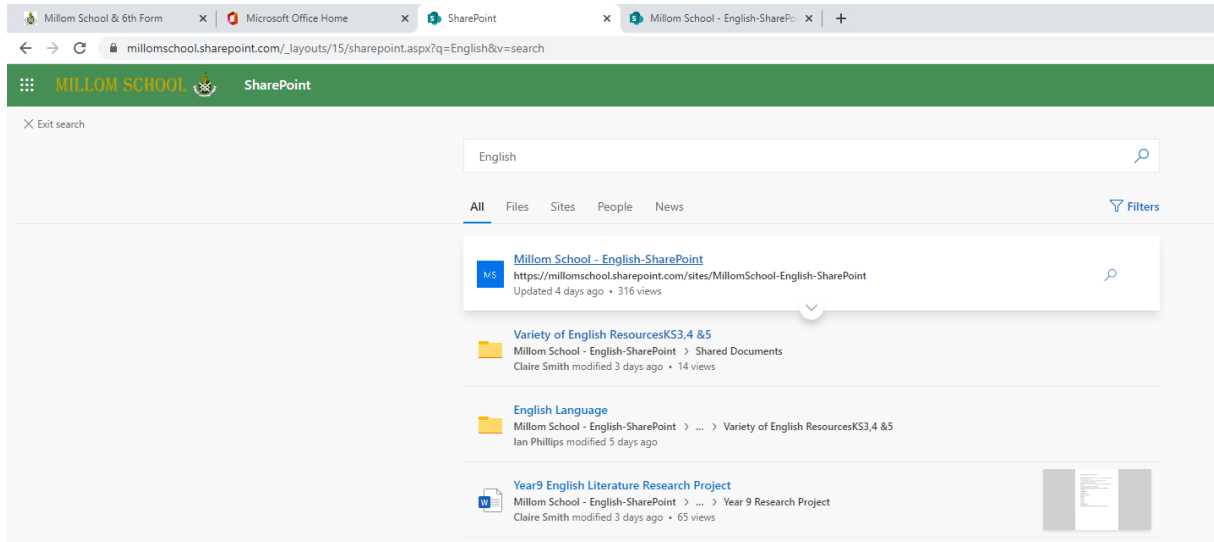


2. On the SharePoint page click on the search icon and type English (Maths or Science).



# SharePoint-How to Find, for Student's

## 3. Select Millom School – English SharePoint



## 4. On this page there is a link called “Documents”, in documents is a folder with the schools English share within it.

